

## Prices Dashboard

Data up to April 2024



Category		Value	Monthly change, %	Yearly change, %
<b>UK food and non-alcoholic drink inflation (CPIH)</b>				
UK food	Index	135.7	▲ 0.4%	▲ 2.8%
UK non-alcoholic drink	Index	137.2	▲ 0.1%	▲ 3.5%
<b>UK producer prices (PPI)</b>				
Input prices: domestic food	Index	146.2	▲ 2.0%	▲ 1.1%
Input prices: imported food	Index	170.2	▲ 0.4%	▼ - 1.7%
Output prices: food for domestic market	Index	134.4	▲ 0.5%	▲ 0.1%
<b>Energy prices and transportation</b>				
Crude oil, brent (\$/bbl)	Price	90	▲ 5.4%	▲ 7.1%
Natural gas (\$/mmbtu)	Price	9	▲ 6.2%	▼ - 32.8%
UK natural gas (£/thm)	Price	71.89	▲ 5.6%	▼ - 18.8%
Shipping container rates	Index	2424.4	▼ - 16.9%	▲ 61.7%
UK haulage	Index	118.8	▲ 0.9%	▲ 0.3%
Fertiliser	Index	156.7	▼ - 0.7%	▼ - 38.6%
<b>Packaging</b>				
Paper and paperboard	Index	129.6	▼ - 0.1%	▼ - 7.0%
Wooden containers	Index	151.3	— 0.0%	▼ - 3.4%
Aluminium (\$/mt)	Price	2,506	▲ 12.6%	▲ 7.0%
<b>Agricultural raw materials</b>				
Sunflower oil (\$/mt)	Price	971	▲ 2.1%	▼ - 6.1%
Rapeseed oil (\$/mt)	Price	1,059	▲ 2.9%	▲ 3.2%
Palm oil (\$/mt)	Price	936	▼ - 0.8%	▼ - 6.9%
Wheat, US HRW (\$/mt)	Price	272	▼ - 0.9%	▼ - 28.0%
Maize (\$/mt)	Price	192	▲ 0.6%	▼ - 34.2%
Rice (\$/mt)	Price	592	▼ - 3.4%	▲ 18.2%
Soybeans (\$/mt)	Price	477	▼ - 2.1%	▼ - 22.4%
Feed wheat (UK)	Index	112	▼ - 3.1%	▼ - 22.6%
Sugar (\$/kg)	Price	0.45	▼ - 4.9%	▼ - 15.1%
Cheese (£/tonne)	Price	3,470	▼ - 0.6%	▼ - 2.3%
Butter (£/tonne)	Price	4,910	▲ 1.2%	▲ 25.3%
Skimmed milk powder (£/tonne)	Price	2,000	▼ - 2.0%	▼ - 1.0%
Cocoa (\$/tonne)	Price	9,877	▲ 32.8%	▲ 249.8%
Beef (UK)	Index	142.2	▲ 0.2%	▲ 4.3%
Chicken (UK)	Index	122.1	▲ 0.8%	▼ - 5.2%
Pork (UK)	Index	131.4	▼ - 0.3%	▲ 1.7%
Potatoes (UK)	Index	245.0	▲ 18.5%	▲ 81.5%
Fish (UK)	Index	147.0	▲ 0.1%	▲ 6.4%

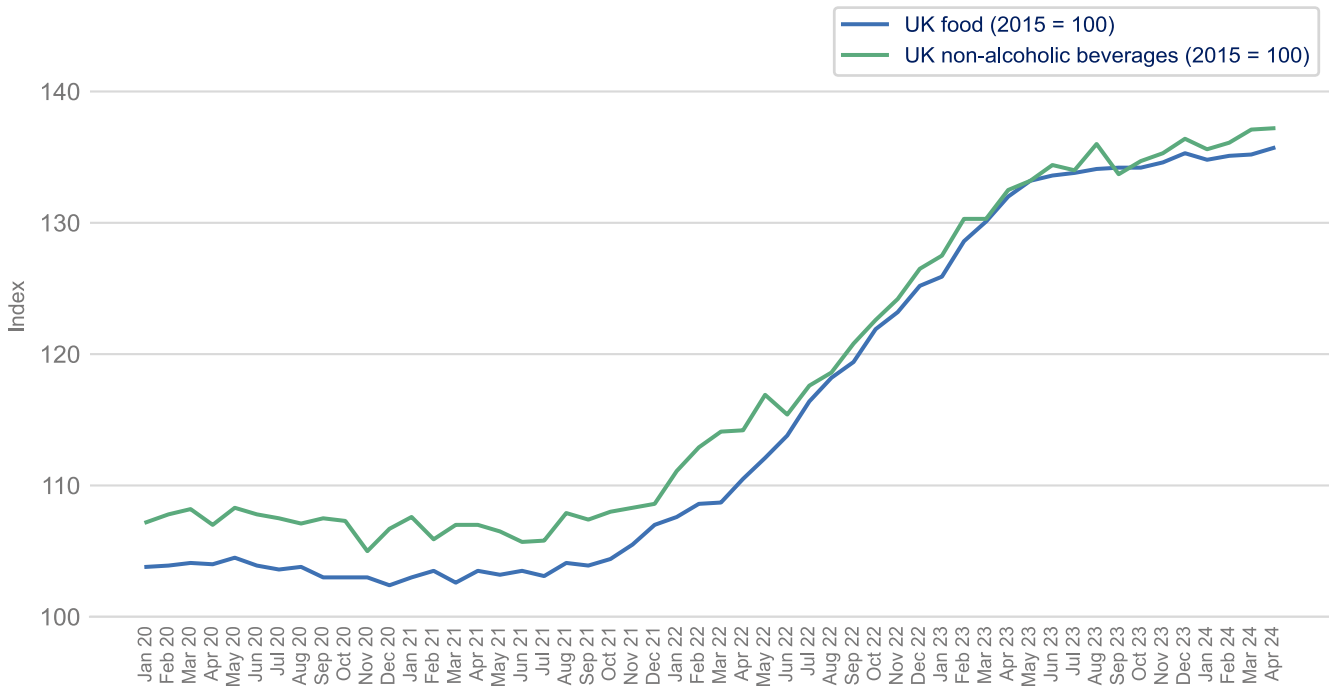
## Prices Dashboard

Data up to April 2024

### UK food and non-alcoholic drink inflation (CPIH)

[Back to Title Page](#)

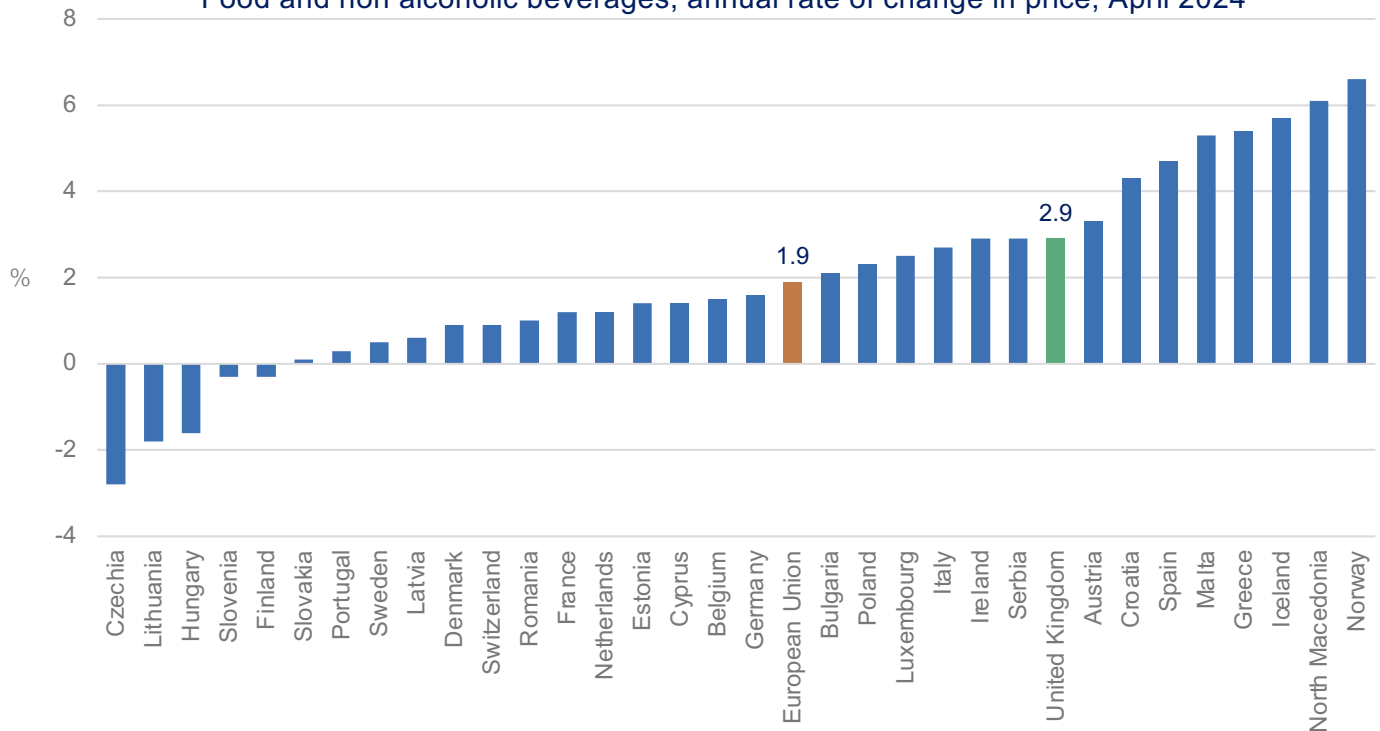
#### UK food and UK non-alcoholic beverages



Source: Office for National Statistics

### Food and drink inflation comparison with Europe

#### Food and non alcoholic beverages, annual rate of change in price, April 2024

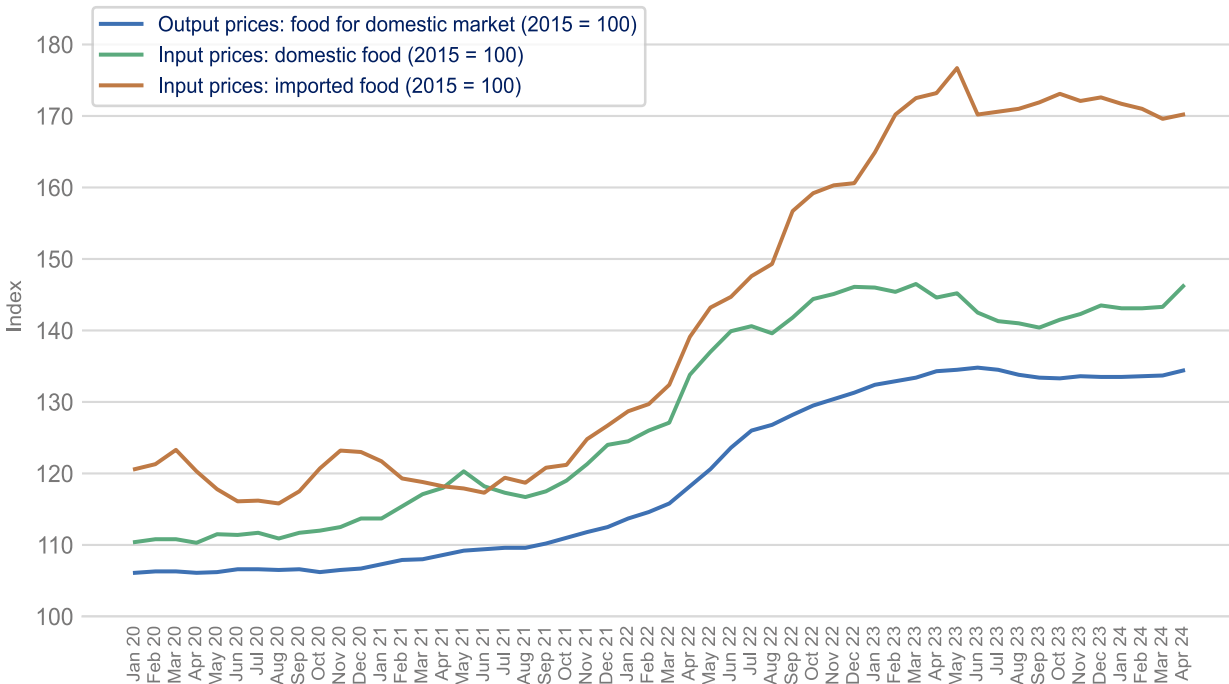


Source: Eurostat

**UK producer prices (PPI)**

[Back to Title Page](#)

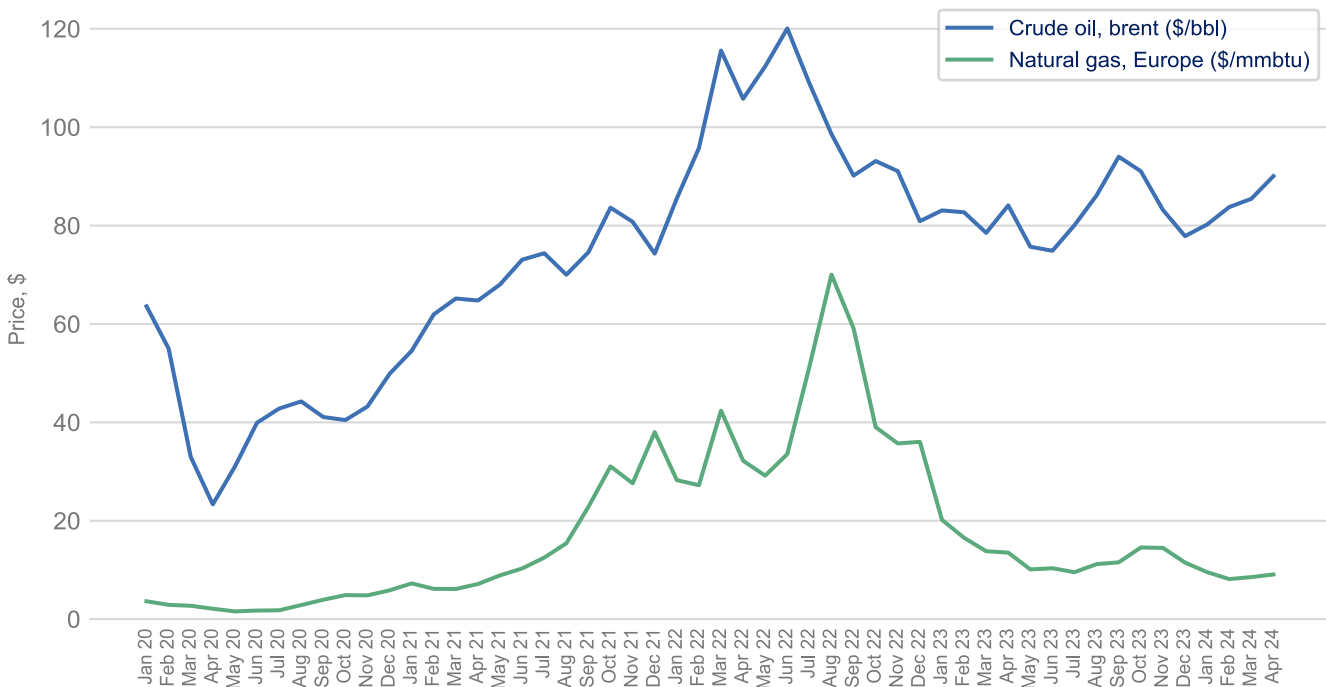
Input prices (domestic food), input prices (imported food), output prices (food for domestic market)



Source: Office for National Statistics

**Energy prices and transportation**

**Crude oil and natural gas**



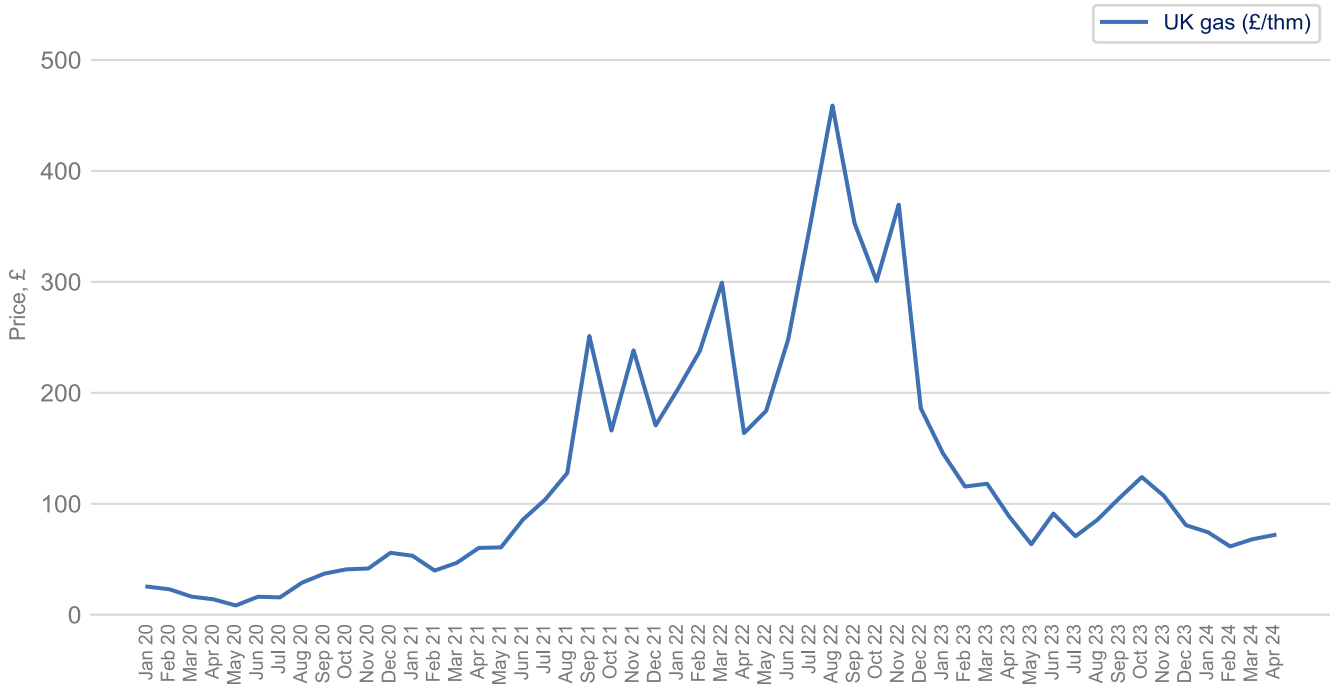
Source: World Bank Commodity Price Data

## Prices Dashboard

Data up to April 2024

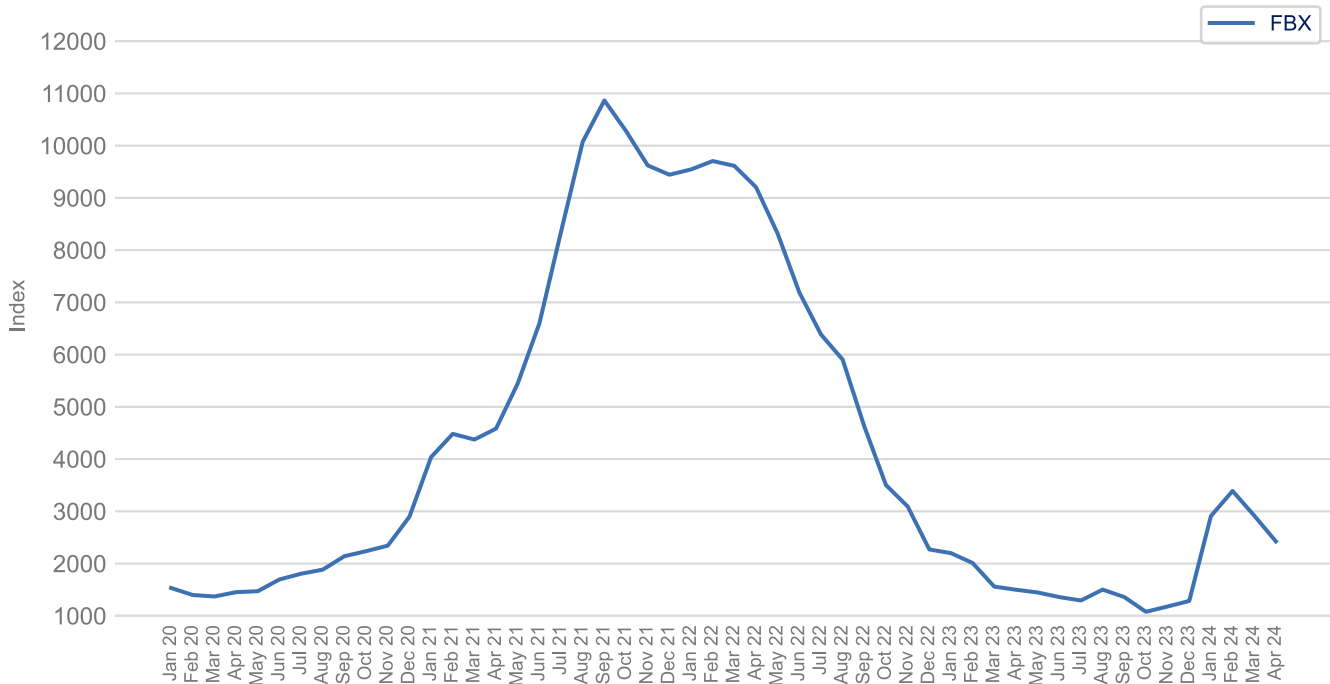
[Back to Title Page](#)

### UK natural gas



Source: Trading Economics

### Freightos Baltic Index (FBX): Global Container Freight Index



Source: Freightos, Global Container Index

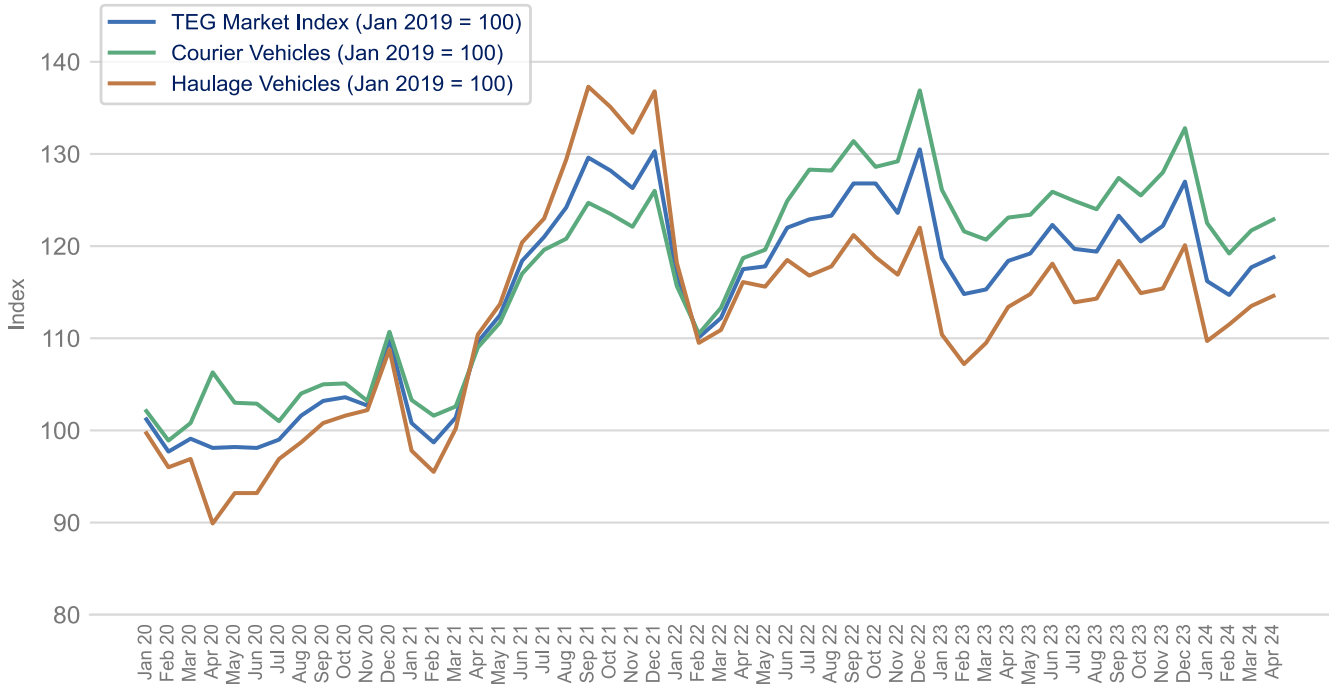
Note: Each monthly index value is an average of the weekly index values of that month

# Prices Dashboard

Data up to April 2024

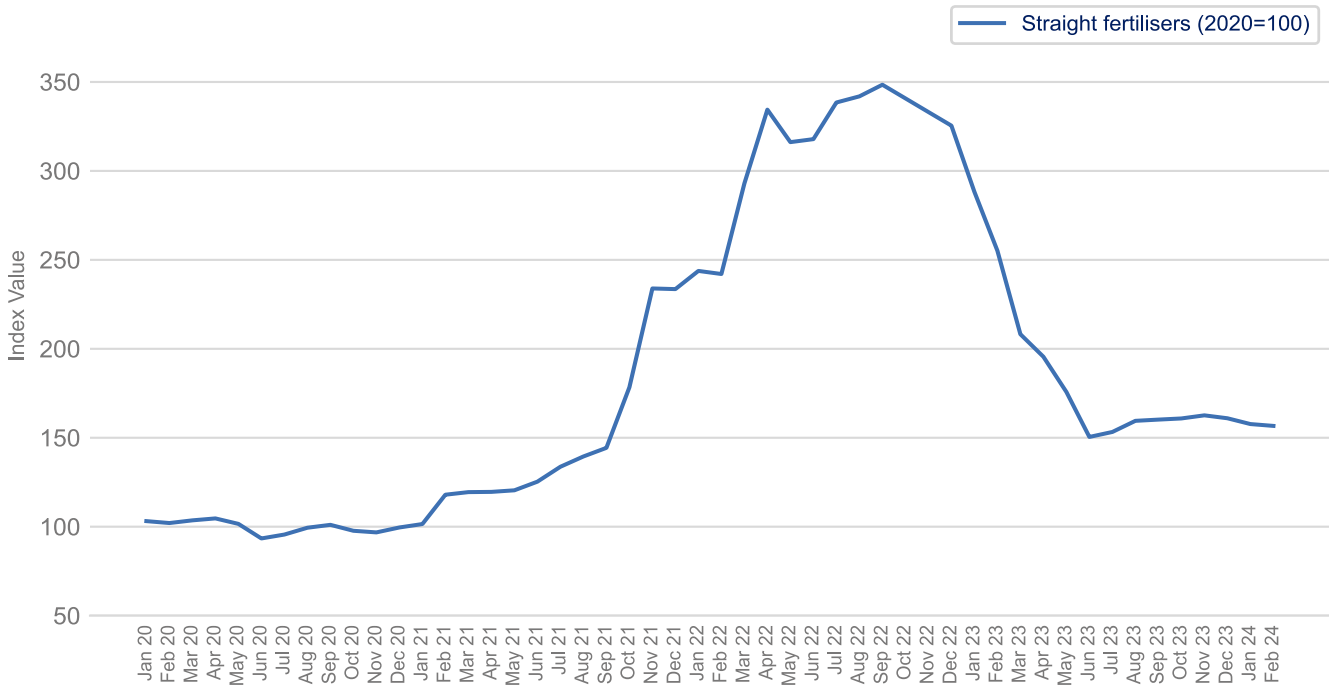
[Back to Title Page](#)

## UK Haulage



Source: Transport Exchange Group

## Straight fertilisers



Source: Department for Environment, Food & Rural Affairs

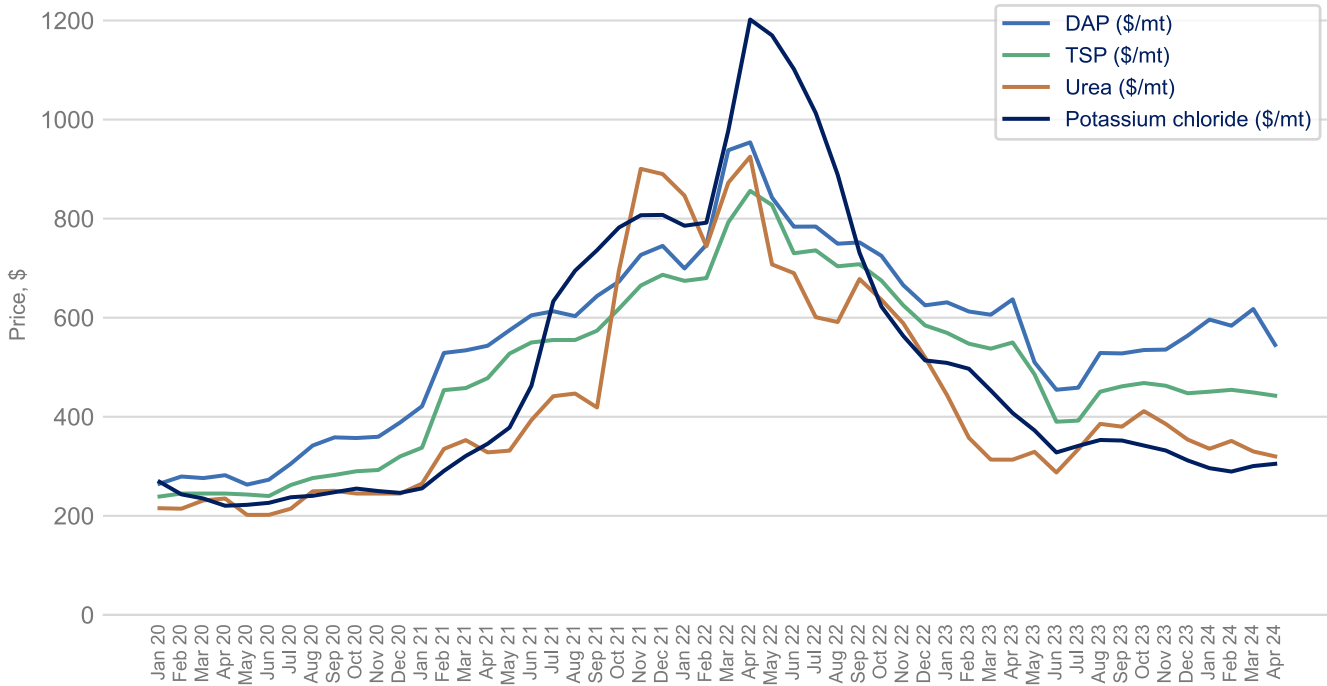
Note: This data is only available to February 2024.

# Prices Dashboard

Data up to April 2024

[Back to Title Page](#)

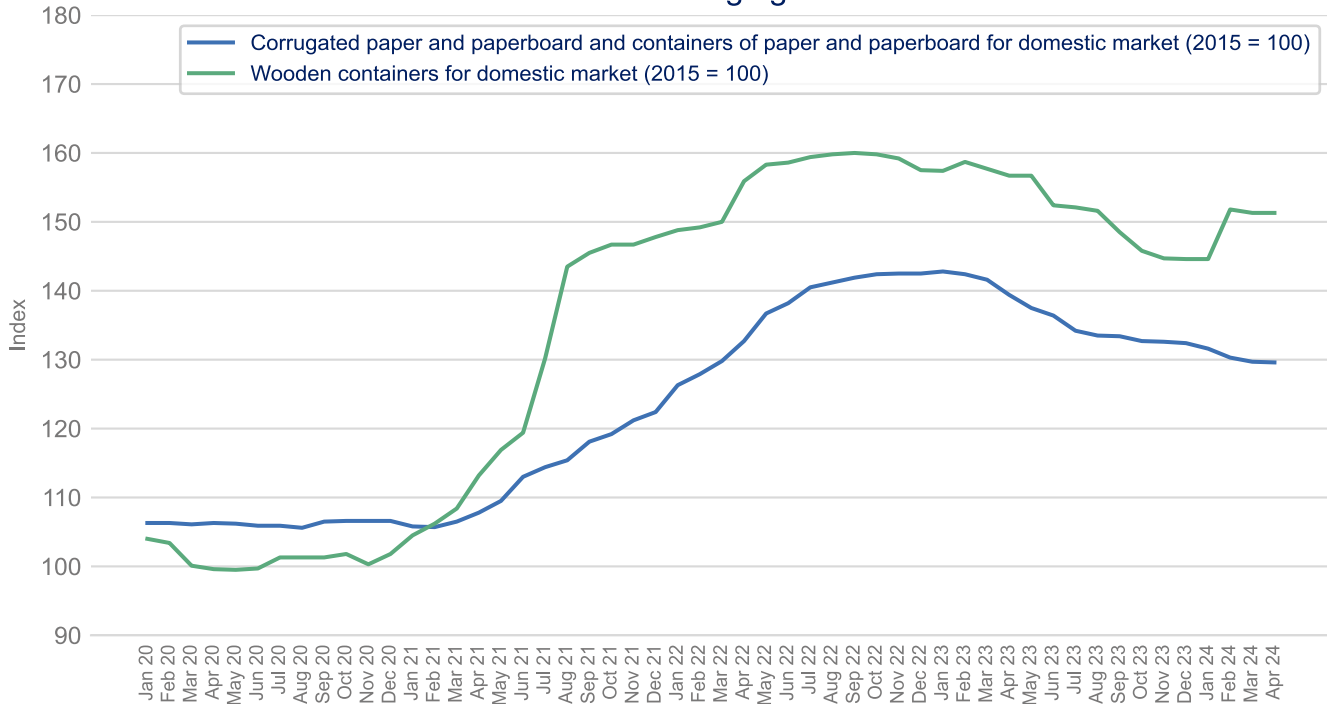
## DAP, TSP, Urea and Potassium Chloride



Source: World Bank Commodity Price Data

## Packaging

### Packaging

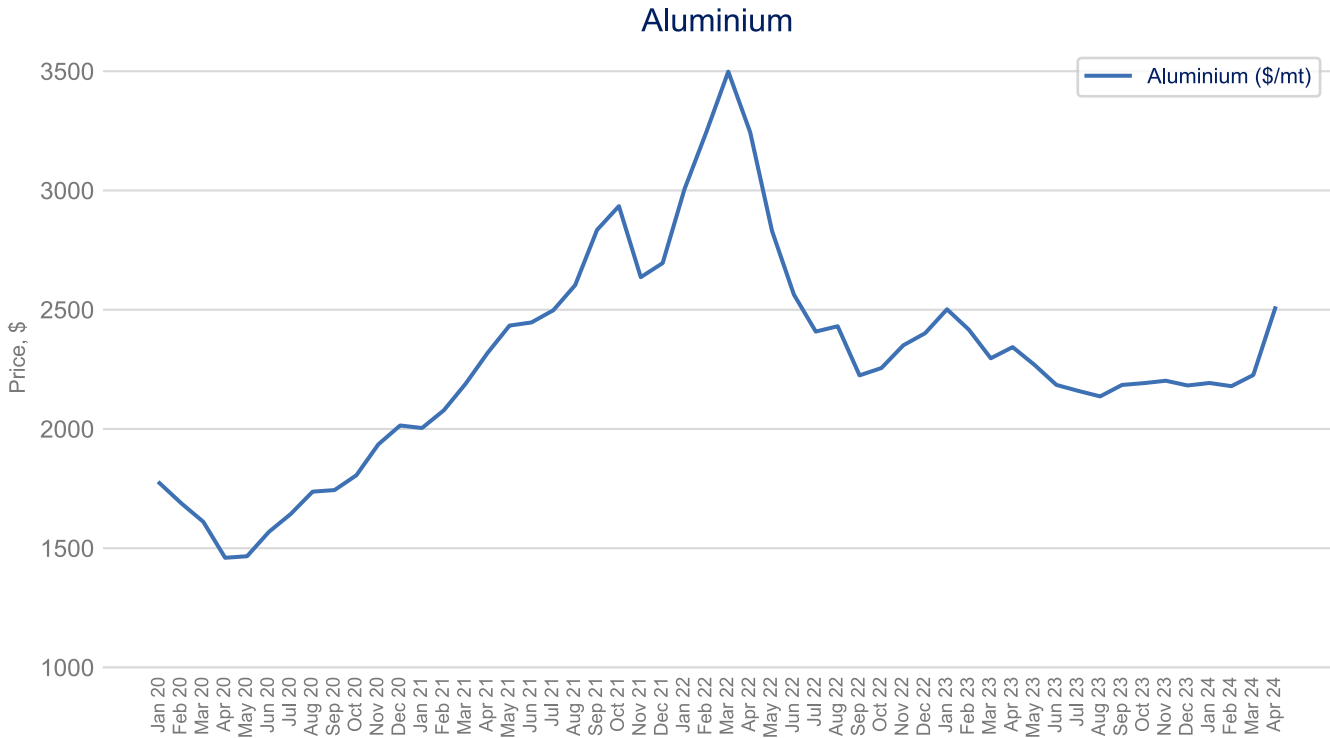


Source: Office for National Statistics

## Prices Dashboard

Data up to April 2024

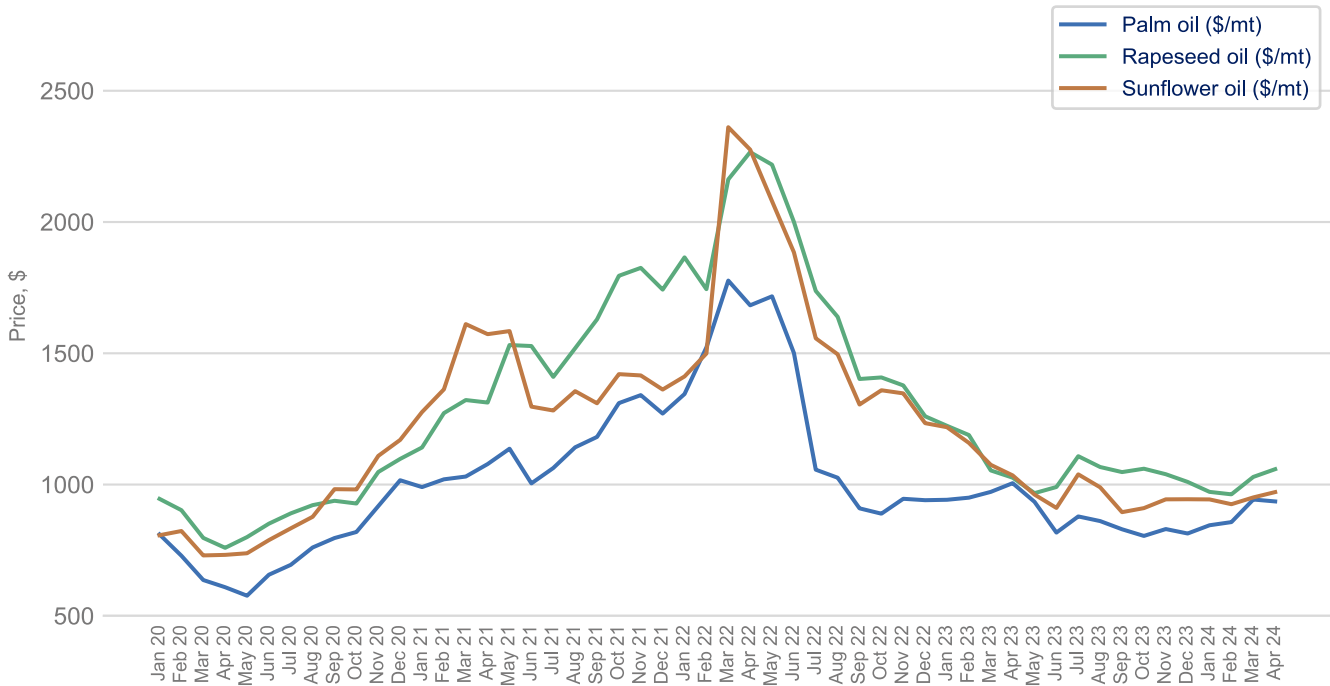
[Back to Title Page](#)



Source: World Bank Commodity Price Data

## Agricultural raw materials

### Palm oil, rapeseed oil and sunflower oil



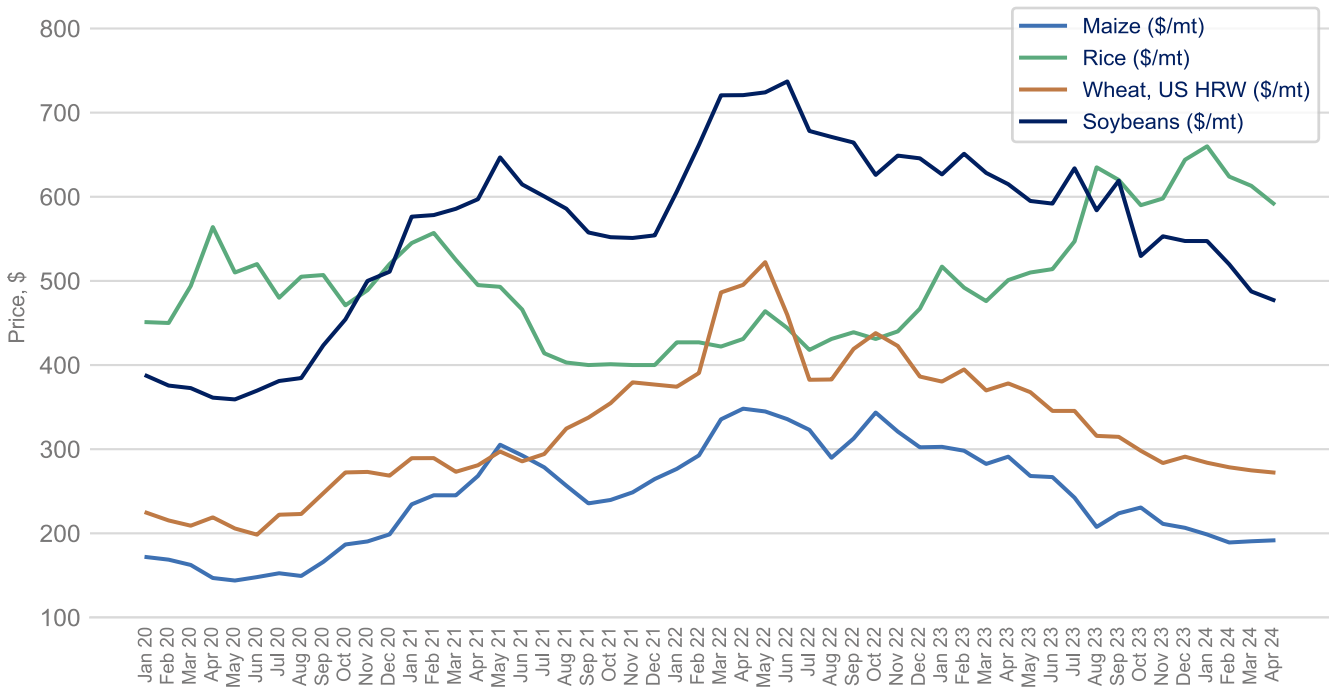
Source: World Bank Commodity Price Data

# Prices Dashboard

Data up to April 2024

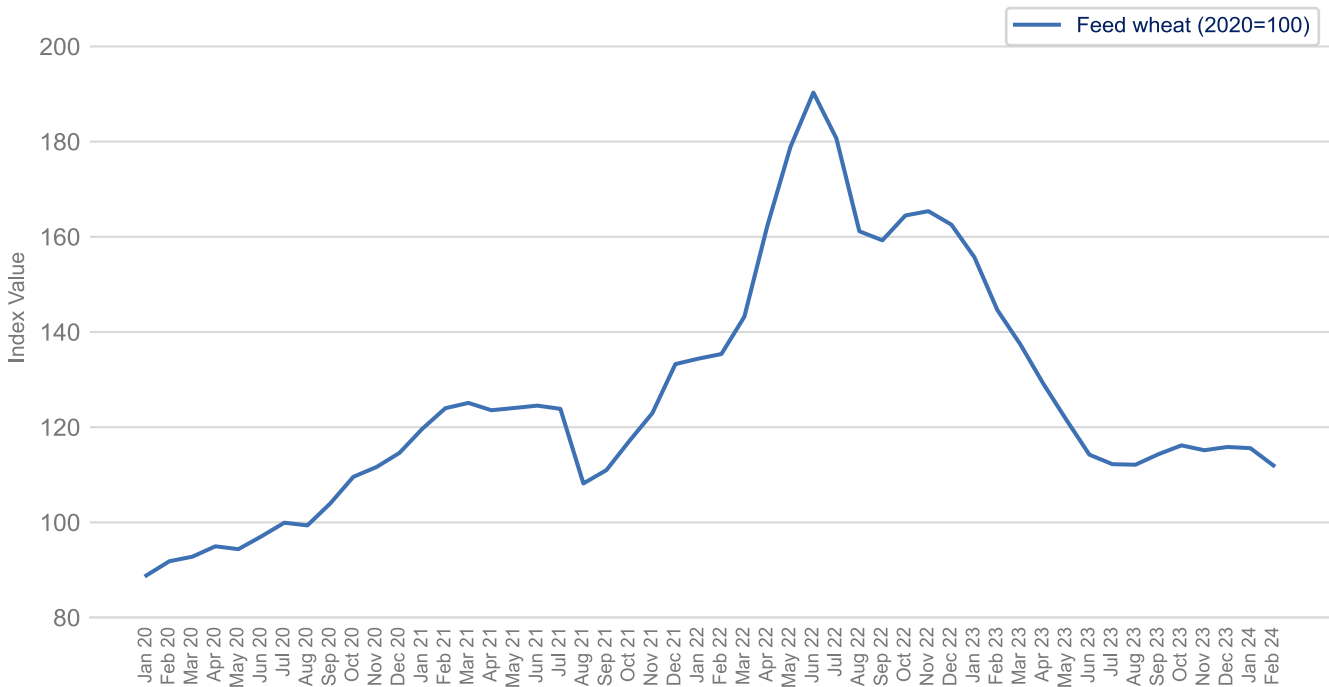
[Back to Title Page](#)

## Maize, rice, wheat and soybeans



Source: World Bank Commodity Price Data

## Feed wheat



Source: Department for Environment, Food & Rural Affairs

Note: This data is only available to February 2024

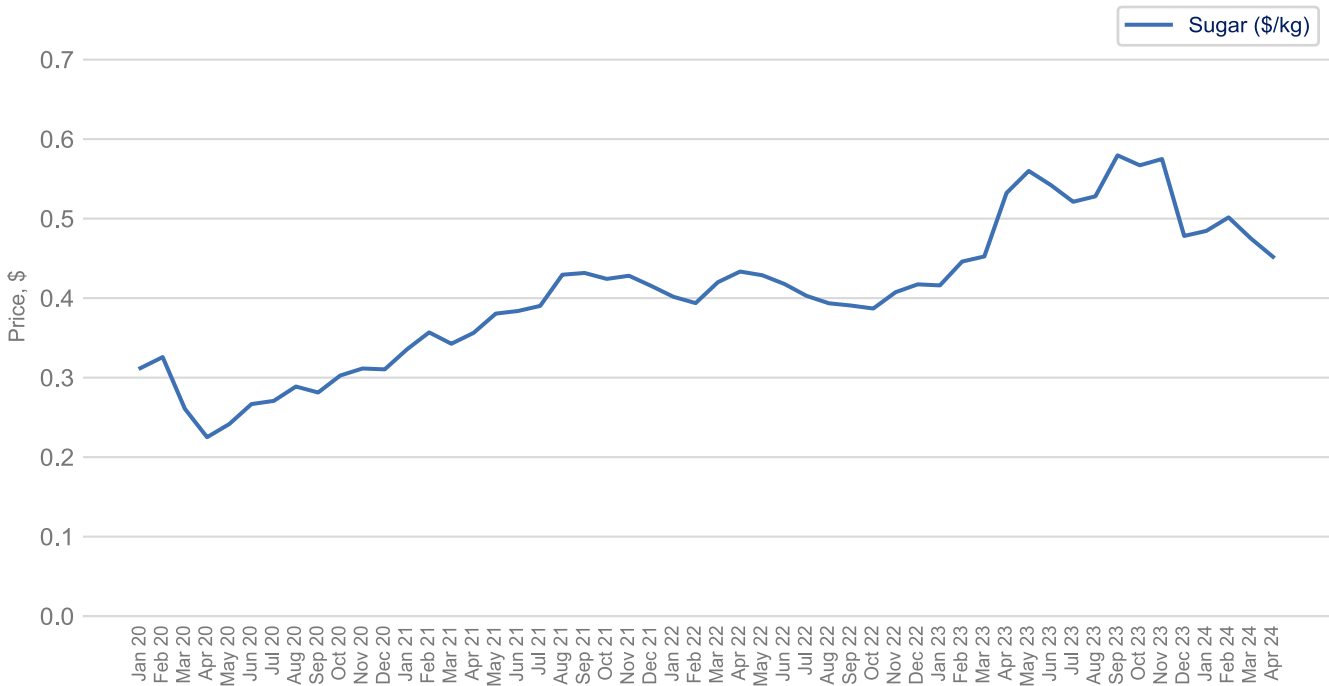


# Prices Dashboard

Data up to April 2024

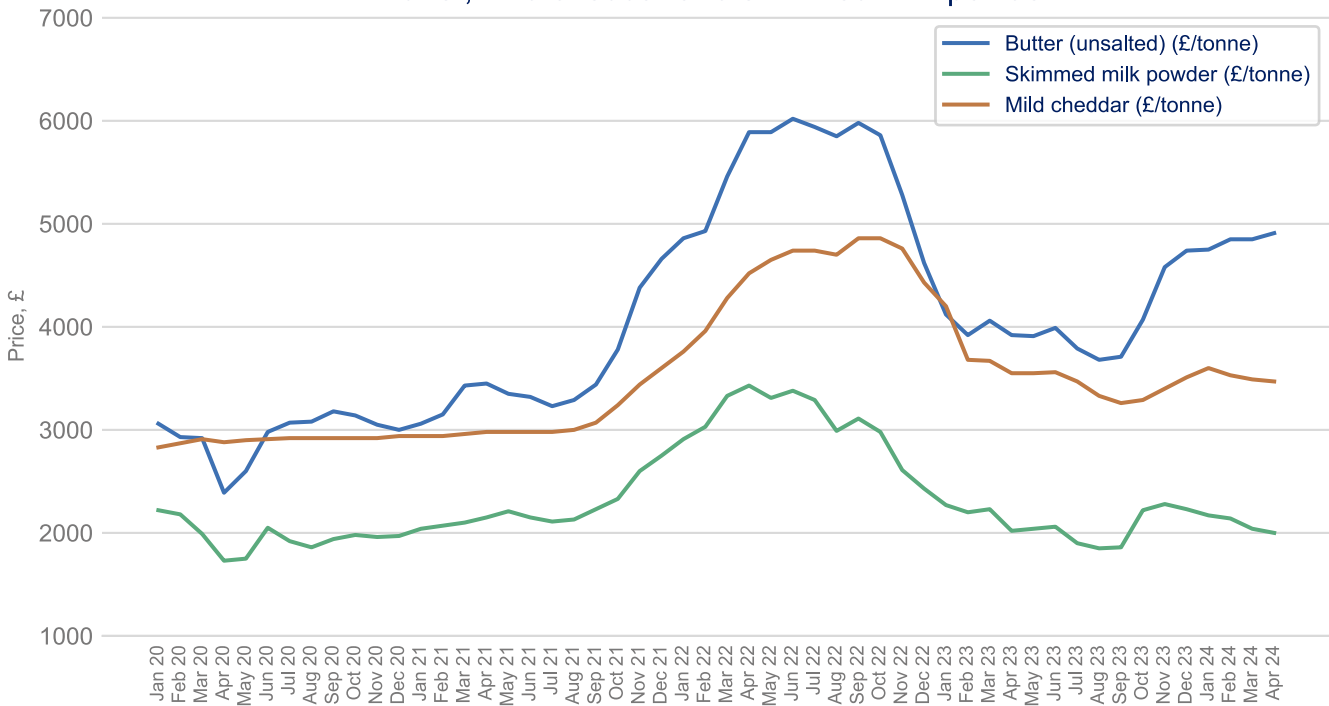
[Back to Title Page](#)

## Sugar



Source: World Bank Commodity Price Data

## Butter, mild cheddar and skimmed milk powder



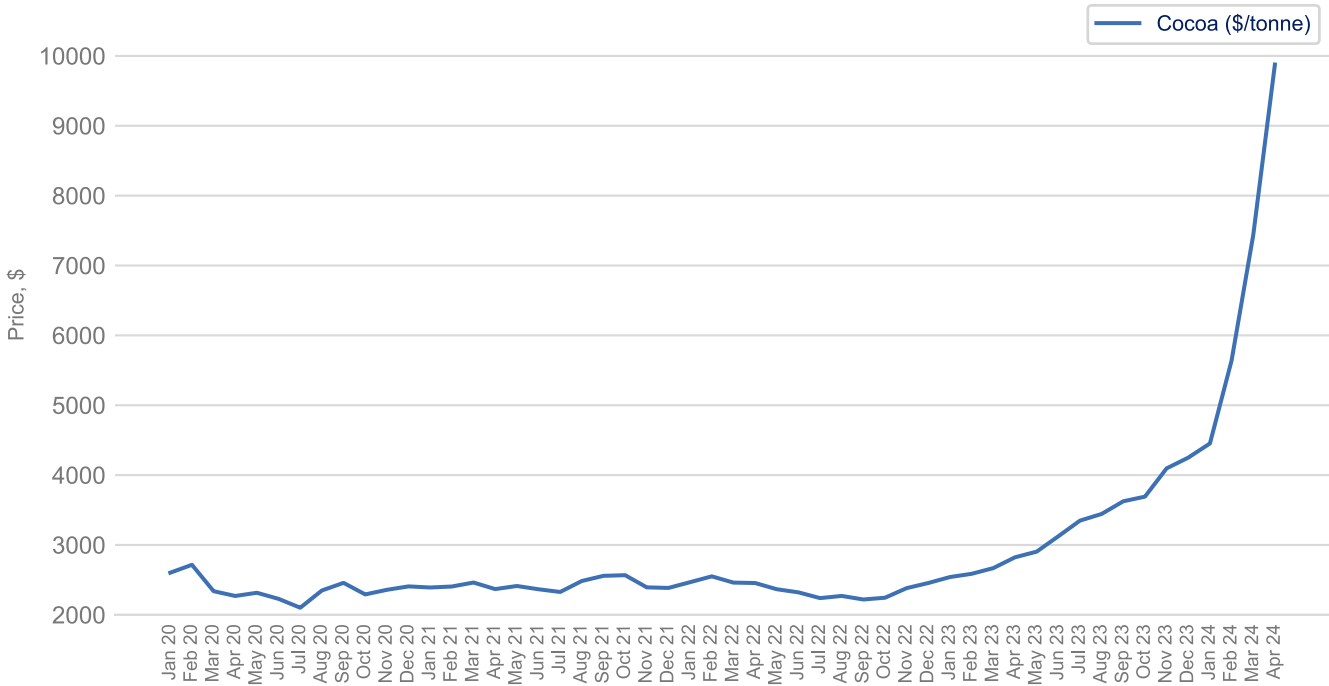
Source: Agriculture and Horticulture Development Board (AHDB)

# Prices Dashboard

Data up to April 2024

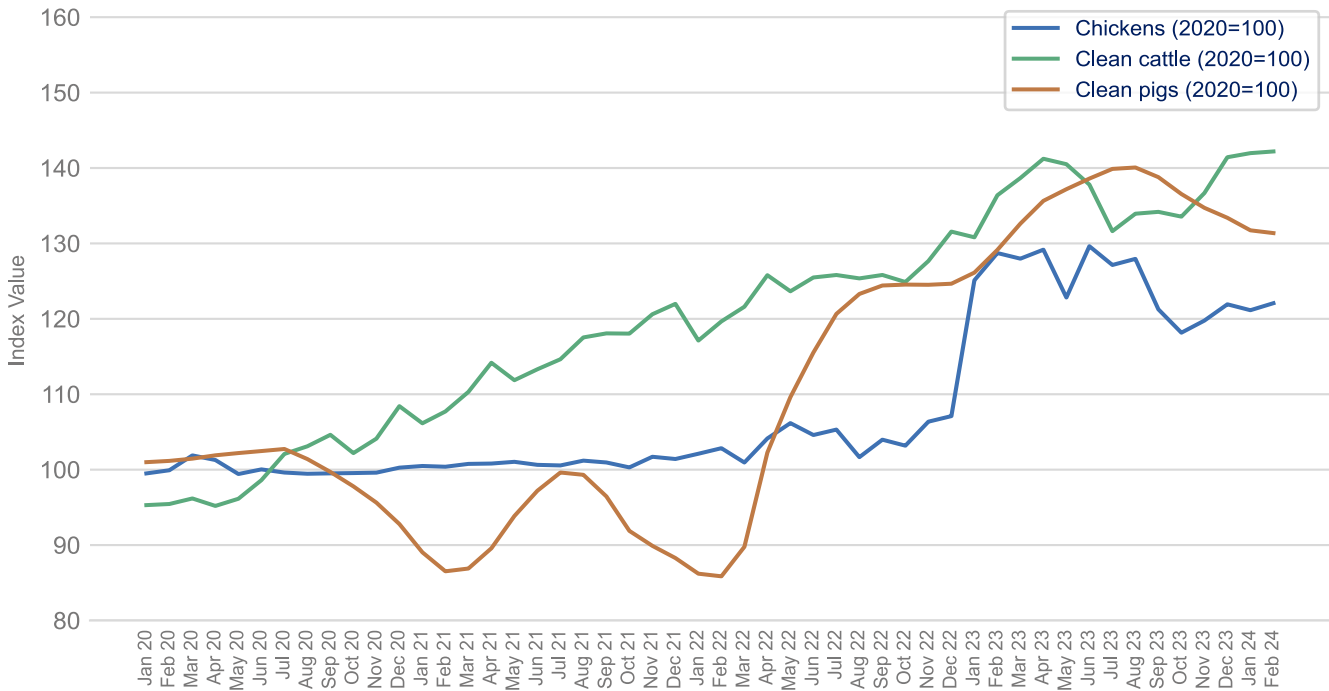
[Back to Title Page](#)

## Cocoa



Source: International Cocoa Organization

## Chicken, beef and pork



Source: Department for Environment, Food & Rural Affairs

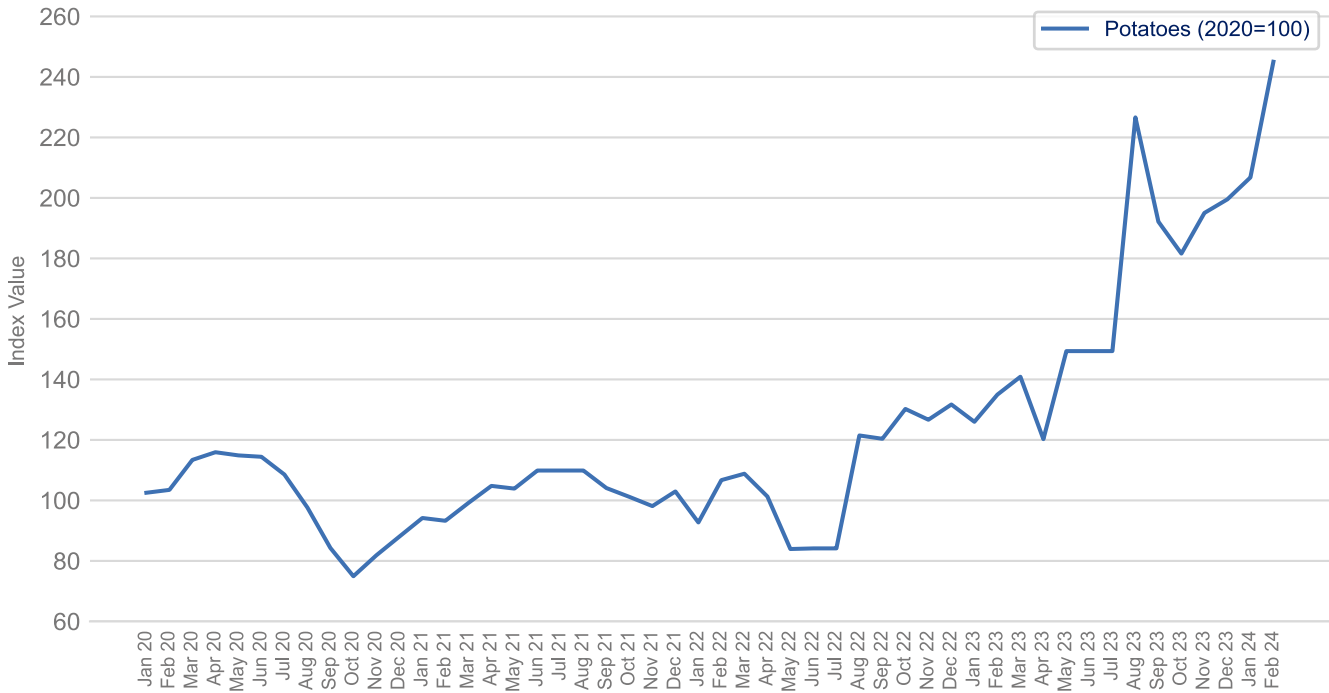
Note: This data is only available to February 2024

## Prices Dashboard

Data up to April 2024

[Back to Title Page](#)

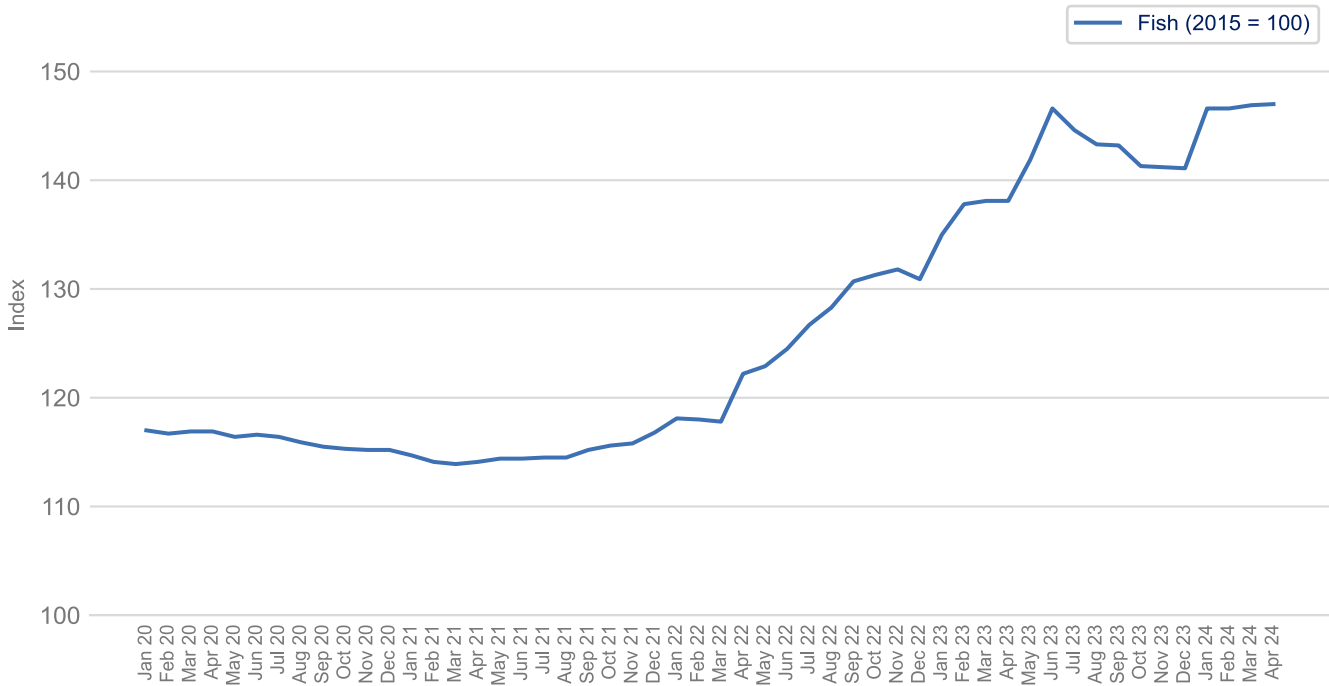
### Potatoes



Source: Department for Environment, Food & Rural Affairs

Note: This data is only available to February 2024

### Preserved and processed fish, crustaceans and molluscs for domestic market



Source: Office for National Statistics

---

## Sources

Agriculture and Horticulture Development Board (AHDB), UK Wholesale Prices

Department for Environment, Food & Rural Affairs, Agricultural Price Indices

Eurostat, HICP - monthly data (annual rate of change)

Freightos, Global Container Freight Index (FBX)

International Cocoa Organization

Office for National Statistics, Consumer Price Inflation & Producer Price Inflation

The World Bank, Commodity Markets, Monthly Prices

Trading Economics, Commodity Prices

Transport Exchange Group, Road Transport Price Index



The Food and Drink Federation (FDF) is the voice of the food and drink manufacturing industry – the UK’s largest manufacturing sector. We contribute over £30 billion to the country’s economy, supporting half a million jobs in every region and nation, and producing products that are loved in the UK and around the world. Food and drink powers our nation.

Find out more about our latest news and the work we do at:

[FDF.org.uk](https://www.fdf.org.uk)

X: [@FoodanddrinkFed](https://twitter.com/FoodanddrinkFed)

[Linkedin](#)